

BEYOND THE 'DIVERSITY DIVIDEND'

Valuing inclusion in an explicitly ethical framework

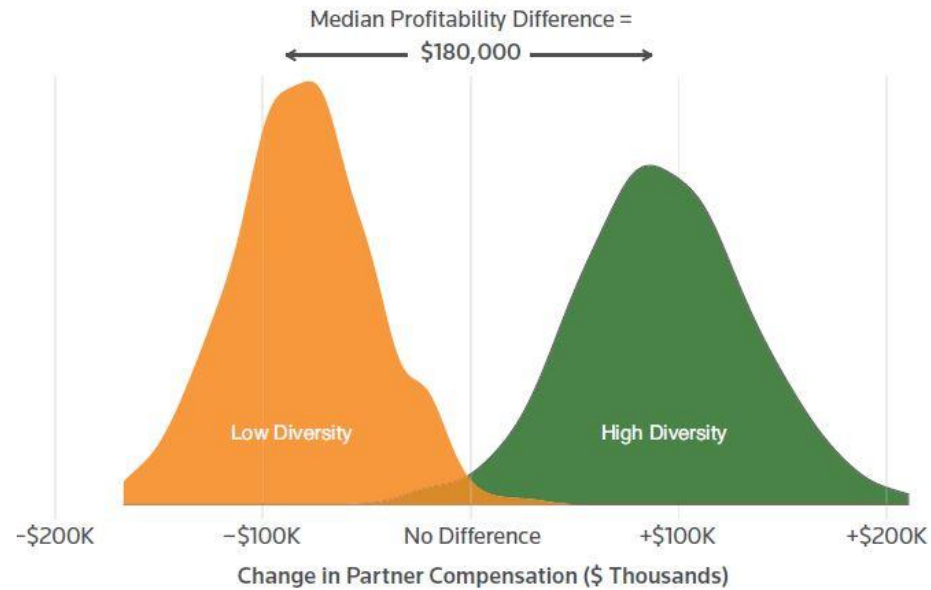


BAHA'I FAITH
NEW ZEALAND

ARAHIA HE ARA
PATHWAYS 2019

THE DIVERSITY DIVIDEND

Figure 2. Difference in Law Firm Profitability for Low Versus High Percentage of Diverse Race/Ethnicity Attorneys



BAHA'I FAITH
NEW ZEALAND

ARAHIA HE ARA - PATHWAYS 2019

THE DIVERSITY DIVIDEND – LIMITATIONS



BAHA'I FAITH
NEW ZEALAND

ARAHIA HE ARA - PATHWAYS 2019

EQUITY AND JUSTICE

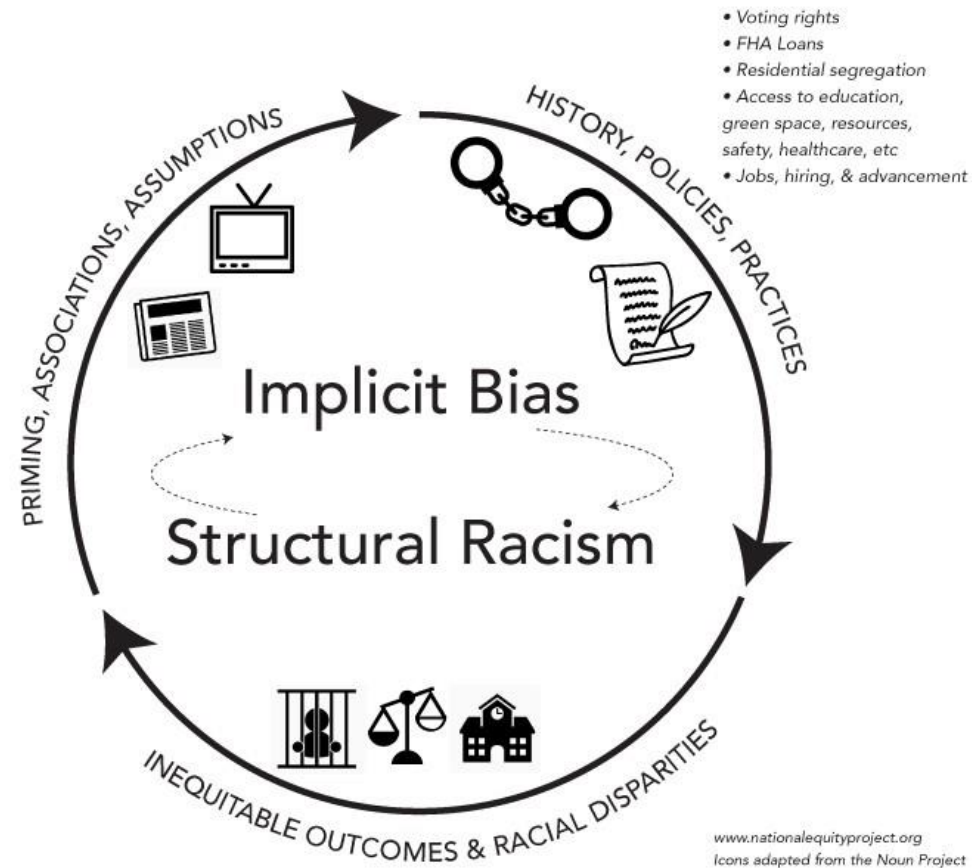
And if thine eyes be turned towards justice, choose thou for thy neighbour that which thou choolest for thyself.



BAHA'I FAITH
NEW ZEALAND

ARAHIA HE ARA - PATHWAYS 2019

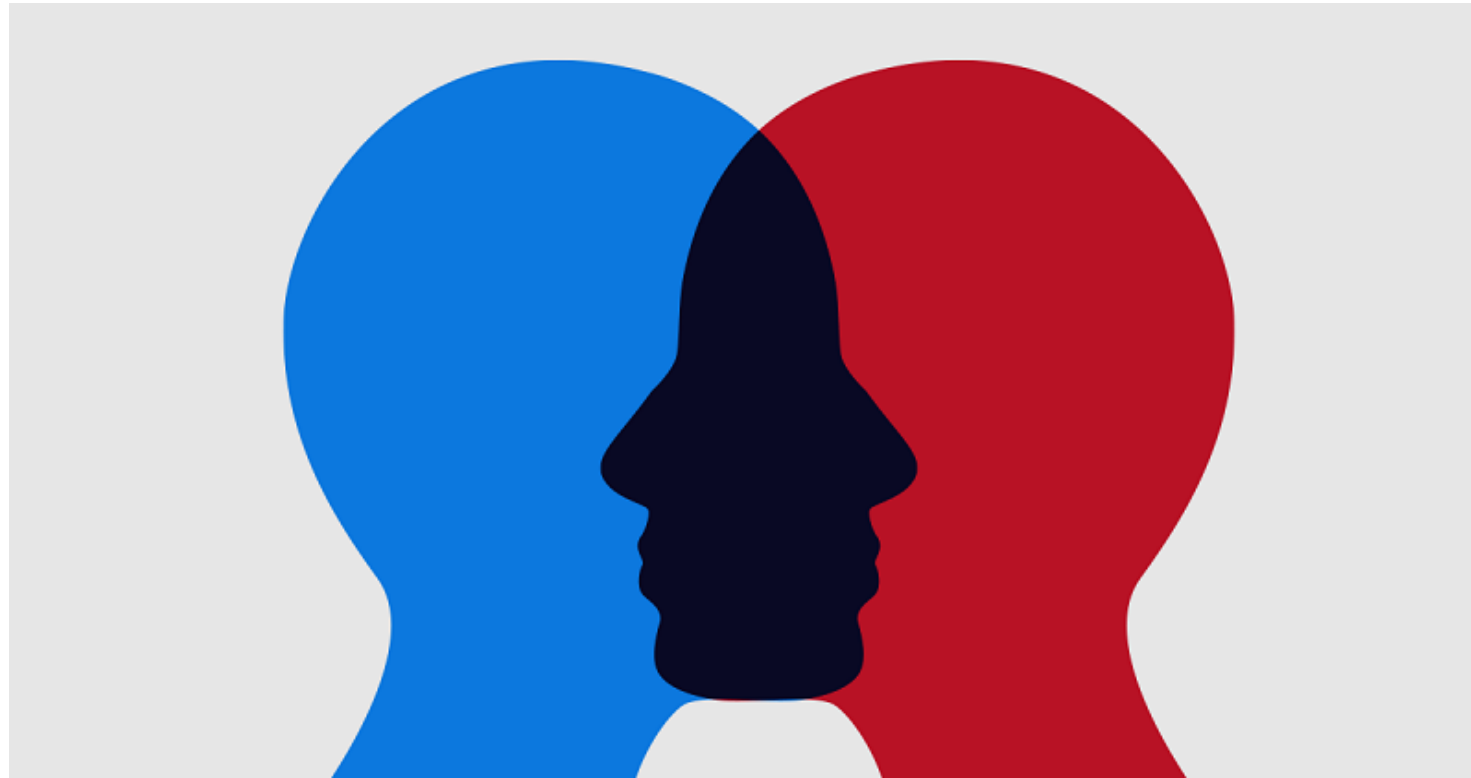
EQUITY AND JUSTICE – INSTITUTIONAL RACISM



BAHA'I FAITH
NEW ZEALAND

ARAHIA HE ARA - PATHWAYS 2019

EQUITY AND JUSTICE – ETHICS AND EMPATHY



BAHA'I FAITH
NEW ZEALAND

ARAHIA HE ARA - PATHWAYS 2019

THE ONENESS OF HUMANITY

The world of humanity is like a tree, the nations or peoples are the different limbs or branches of that tree, and the individual human creatures are as the fruits and blossoms thereof.

THE ONENESS OF HUMANITY – UNIVERSAL PARTICIPATION



BAHA'I FAITH
NEW ZEALAND

ARAHIA HE ARA - PATHWAYS 2019

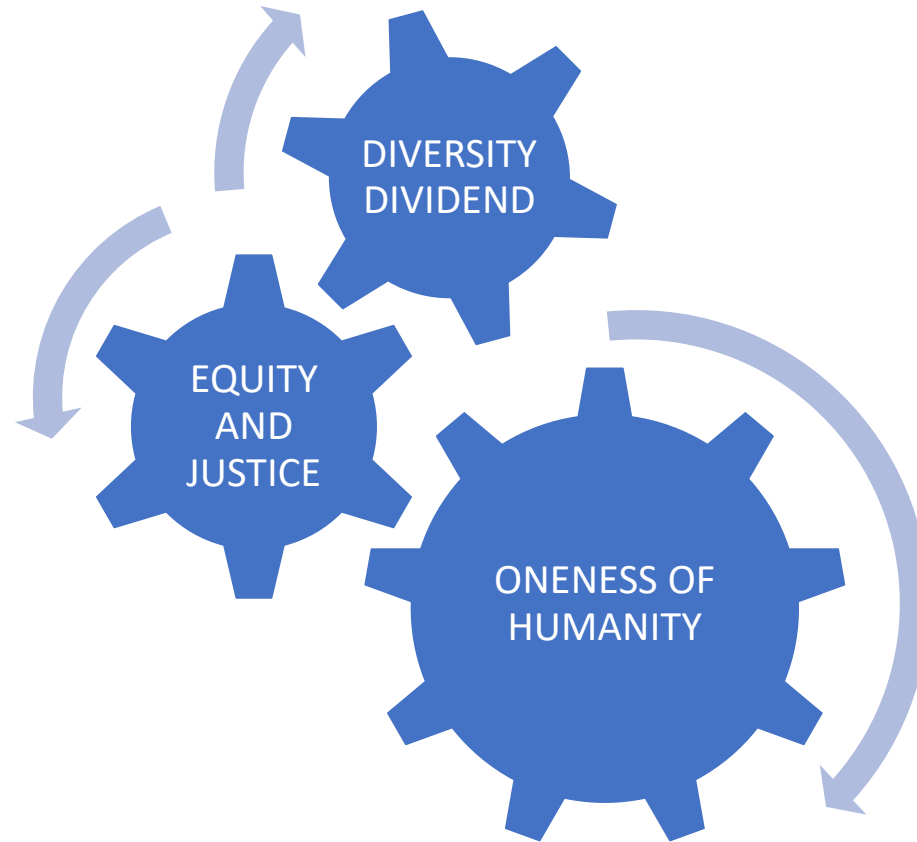
ONENESS OF HUMANITY – THOUGHT AND ACTION



BAHA'I FAITH
NEW ZEALAND

ARAHIA HE ARA - PATHWAYS 2019

CONCLUSION – COMPLEMENTARY CONCEPTS



BAHA'I FAITH
NEW ZEALAND

ARAHIA HE ARA - PATHWAYS 2019