



**MINISTRY OF BUSINESS,
INNOVATION & EMPLOYMENT**
HIKINA WHAKATUTUKI

Immigration Outcomes of International Tertiary Students in New Zealand

Cath Taylor (Research Analyst)



Student Immigration Outcomes

1. What proportion of international fee-paying students transition to a work or residence visa in NZ?
2. What are the characteristics of students who transition and are there particular pathways for certain groups of students?



Student Immigration Outcomes

- Population
- Characteristics
- Data source



Disclaimer

The results in this presentation are not official statistics, they have been created for research purposes from the Integrated Data Infrastructure (IDI), managed by Statistics New Zealand.

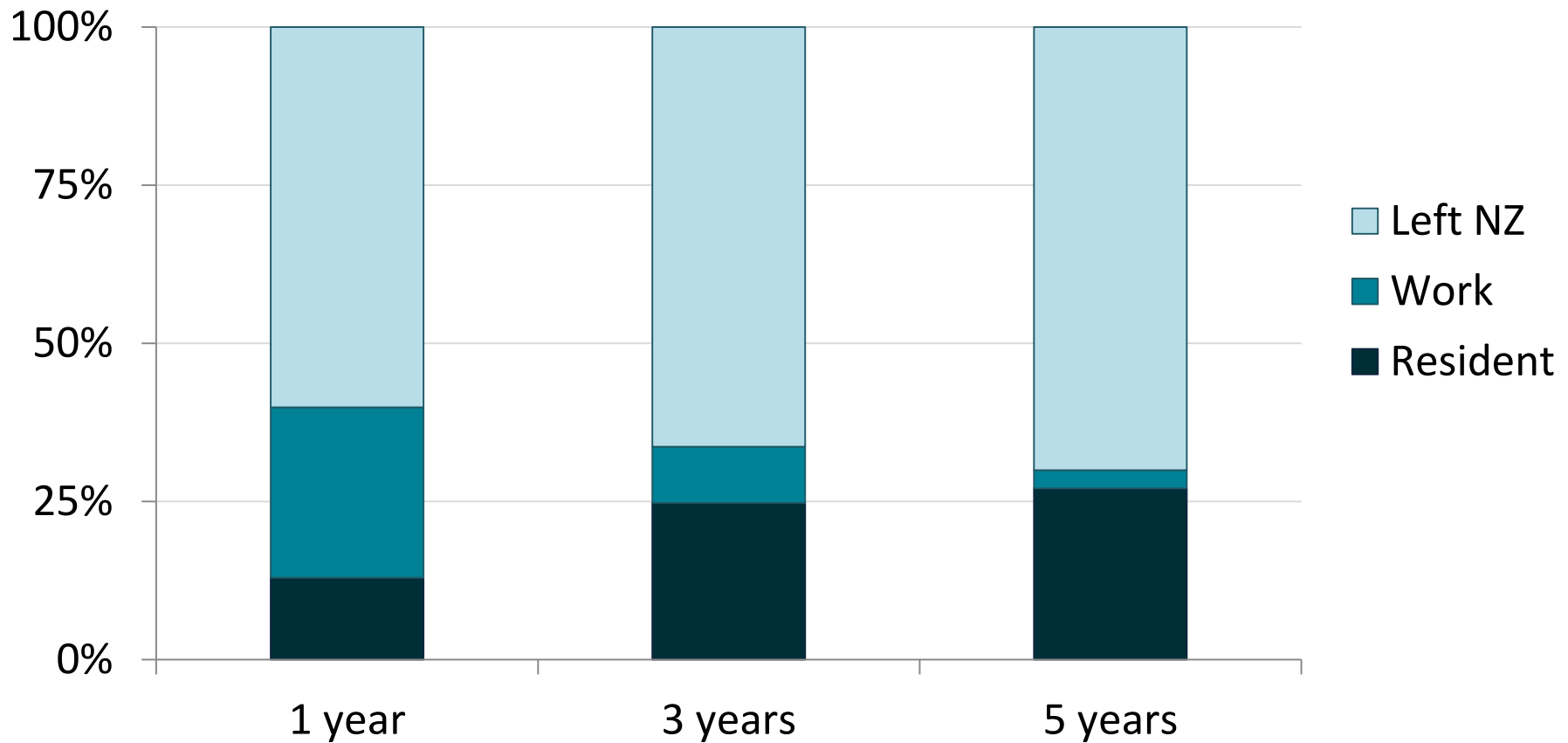
The opinions, findings, recommendations, and conclusions expressed in this presentation are those of the author(s), not Statistics NZ, or the Ministry of Business, Innovation and Employment.

Access to the anonymised data used in this study was provided by Statistics NZ in accordance with security and confidentiality provisions of the Statistics Act 1975. Only people authorised by the Statistics Act 1975 are allowed to see data about a particular person, household, business, or organisation, and the results in this [report, paper] have been confidentialised to protect these groups from identification.

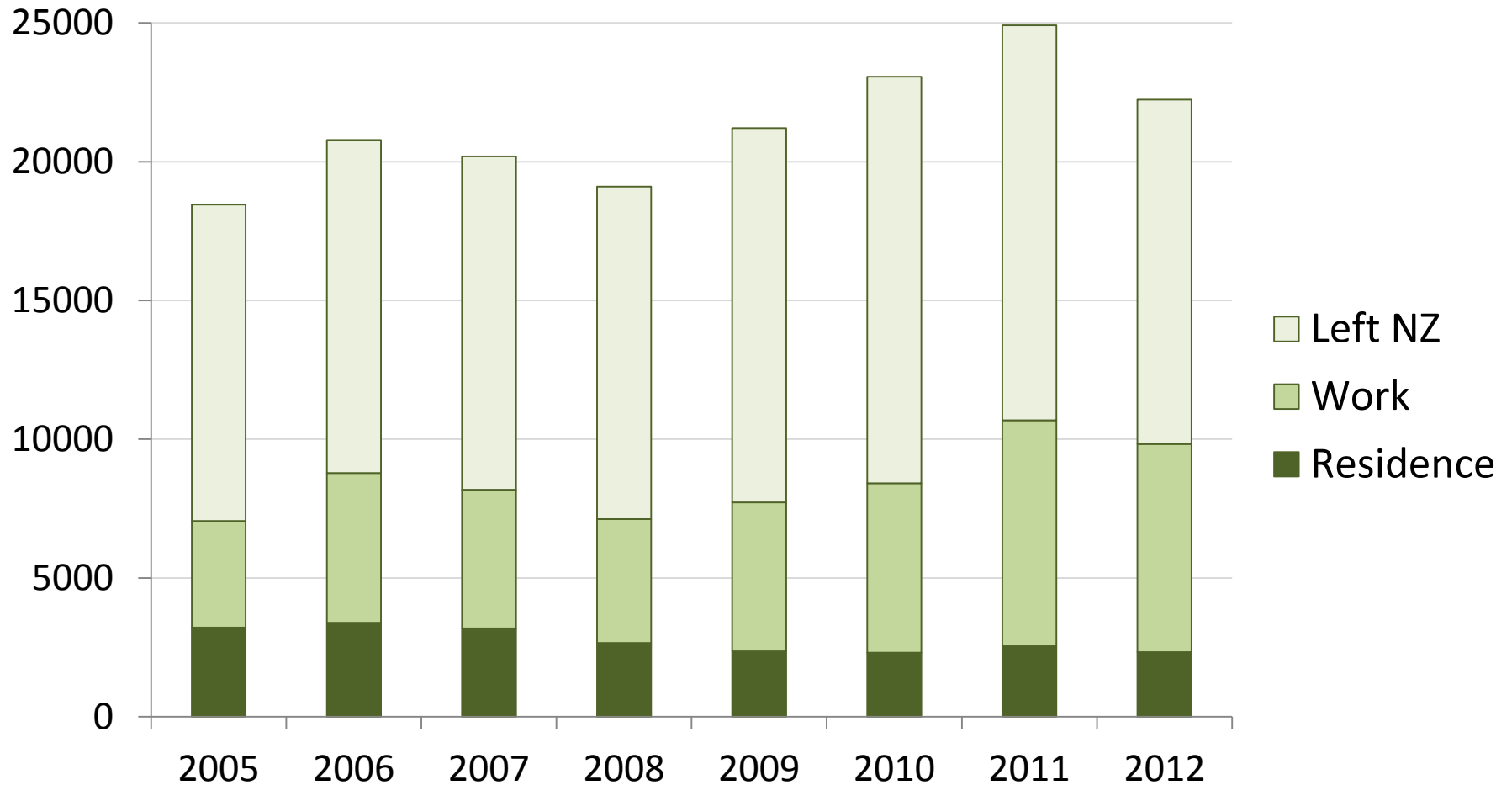
Careful consideration has been given to the privacy, security, and confidentiality issues associated with using administrative and survey data in the IDI. Further detail can be found in the Privacy impact assessment for the Integrated Data Infrastructure available from www.stats.govt.nz.



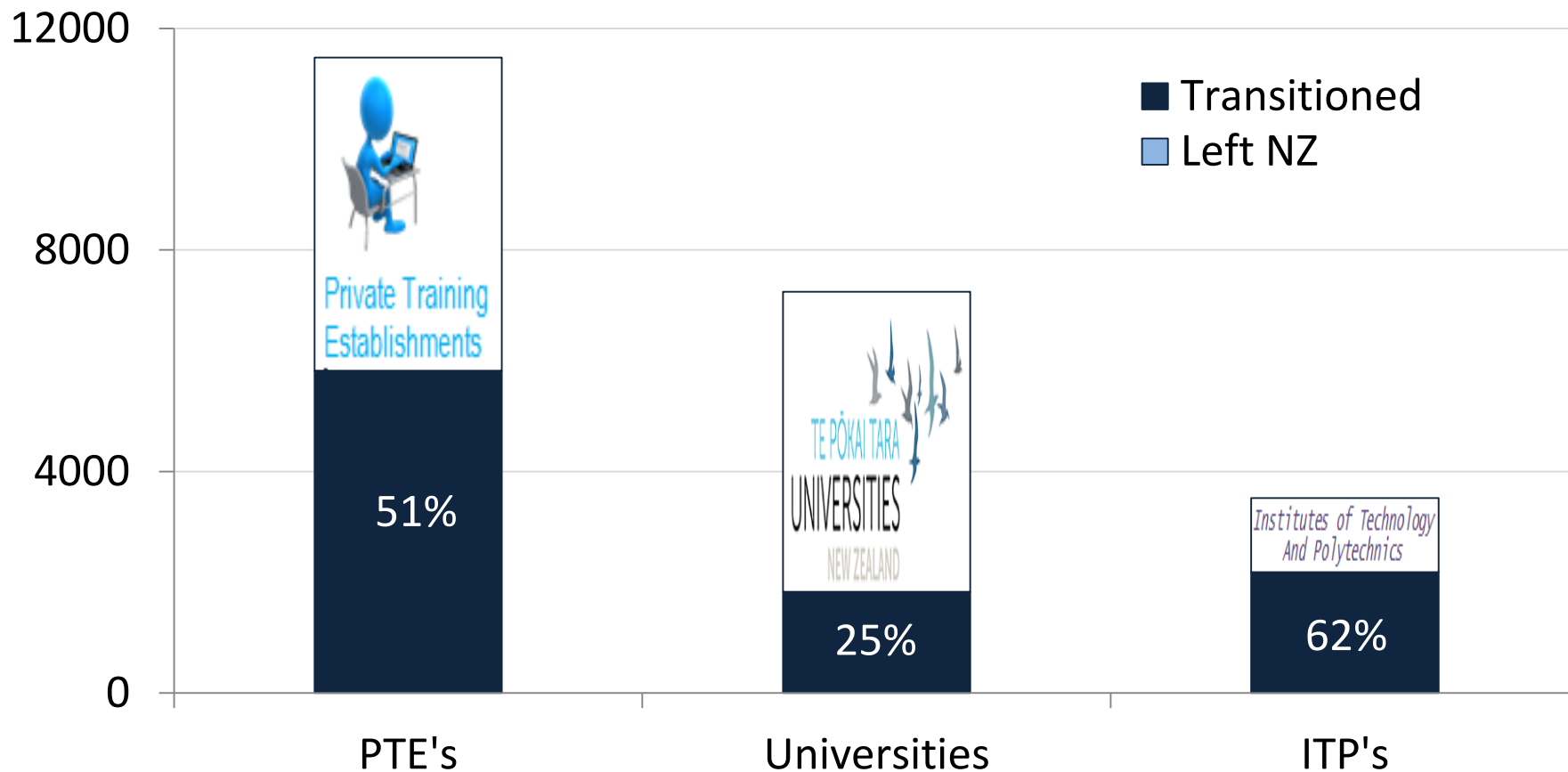
30% of former international students remain in NZ five years post study



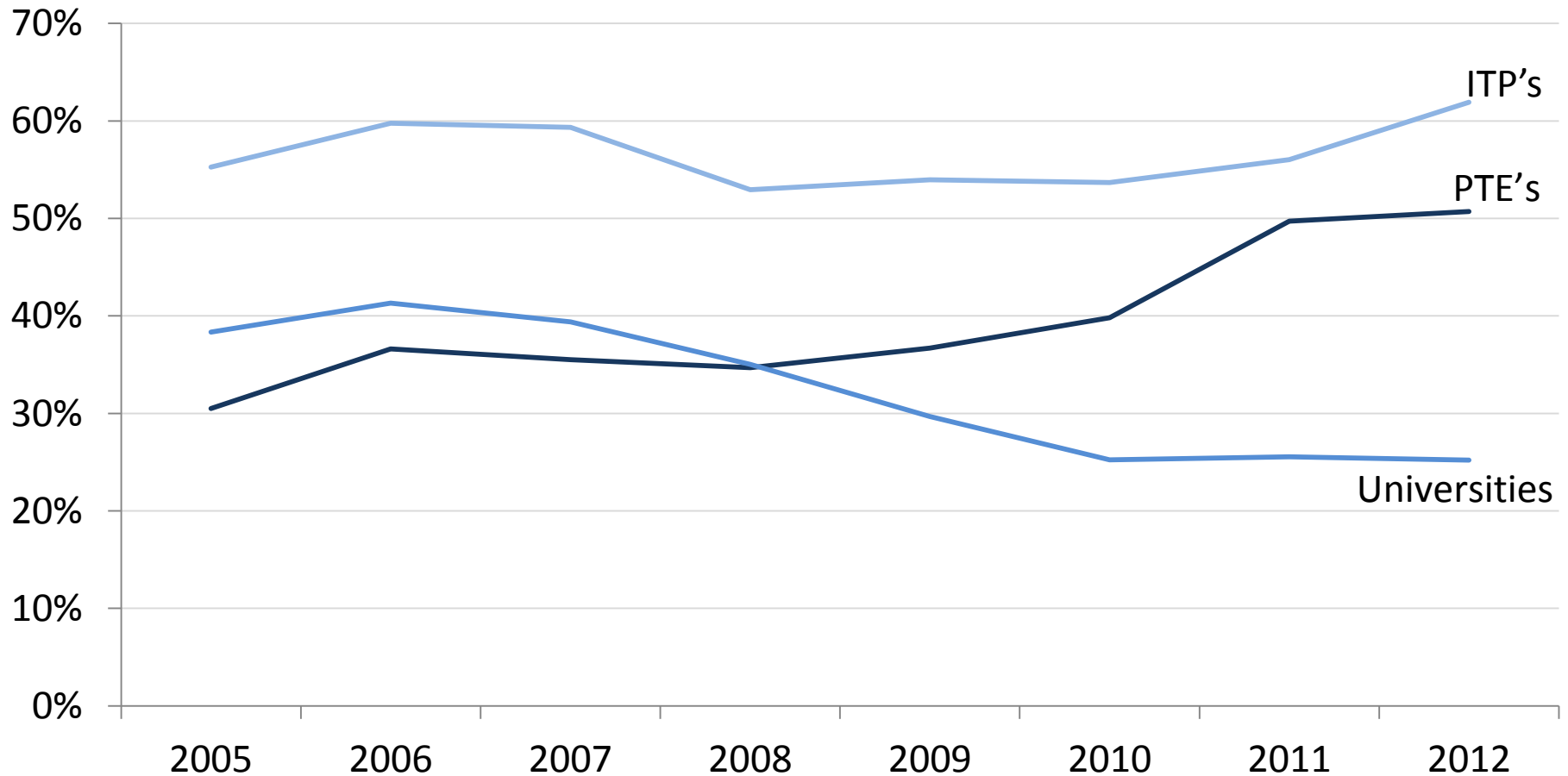
Increasing use of work policies to transition



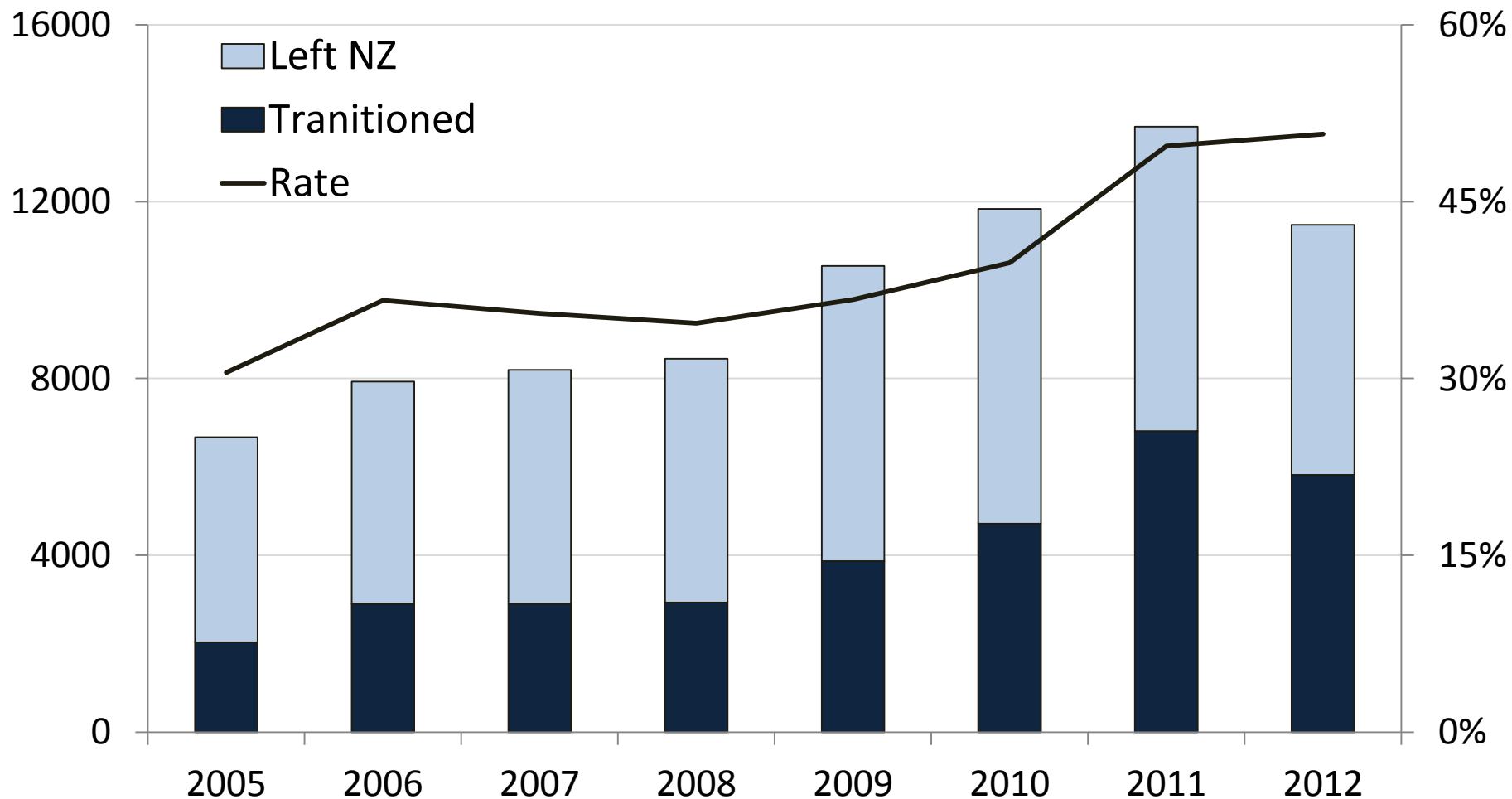
2012 PTE leavers outnumber University and ITP students transitioning one year post study



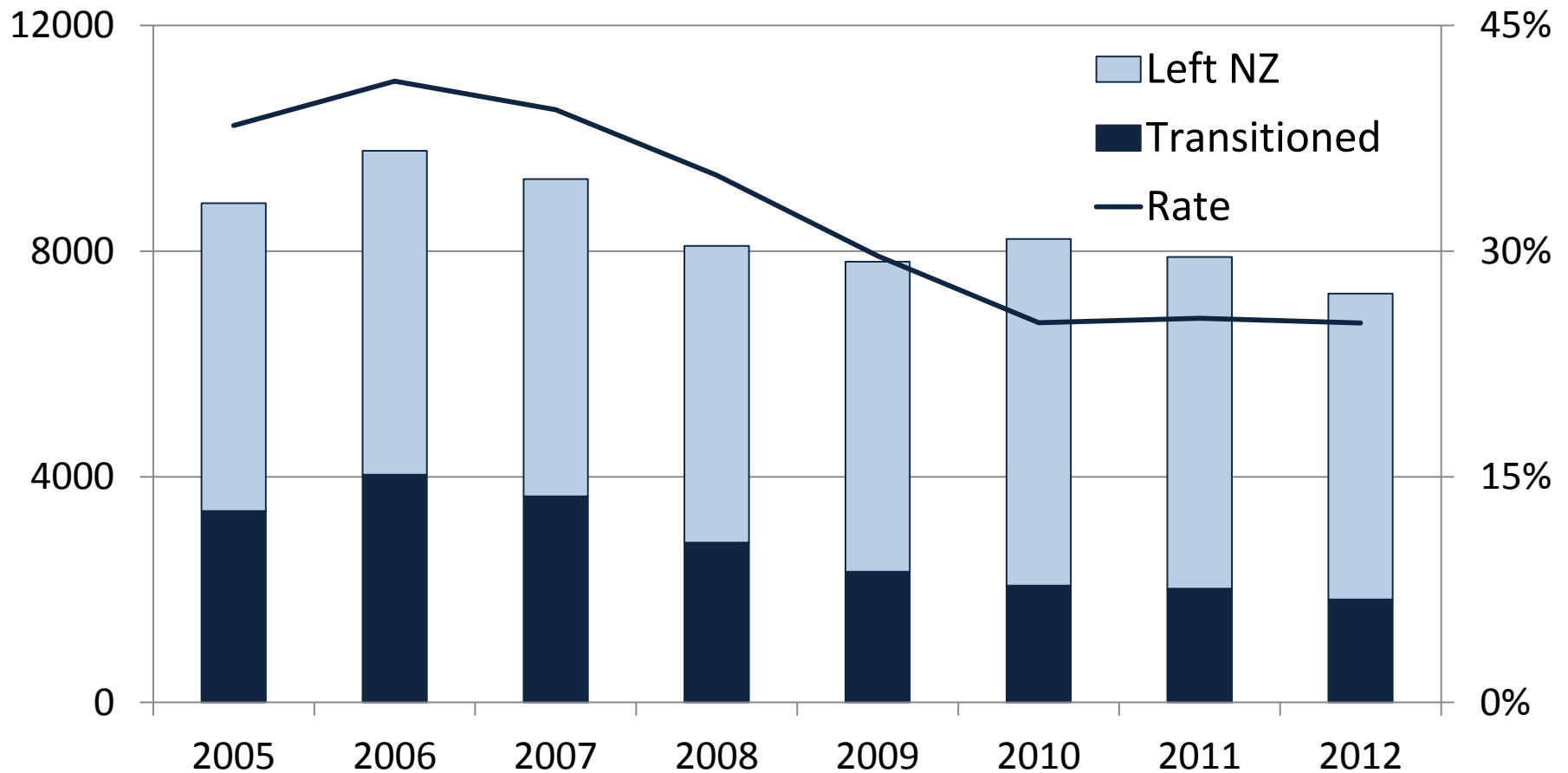
ITP's highest transition rate of all provider types



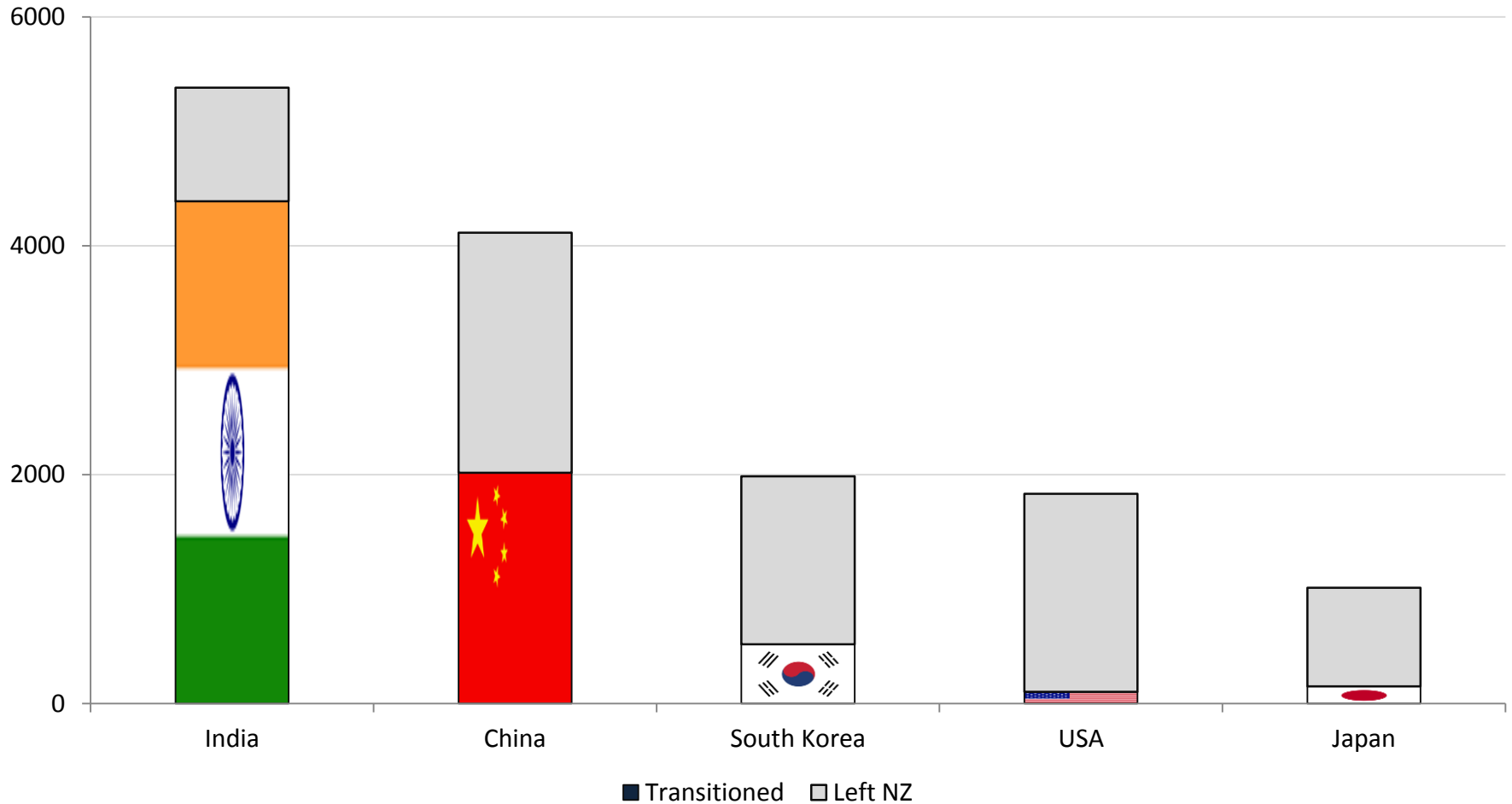
Increase in rate and number of PTE leavers transitioning



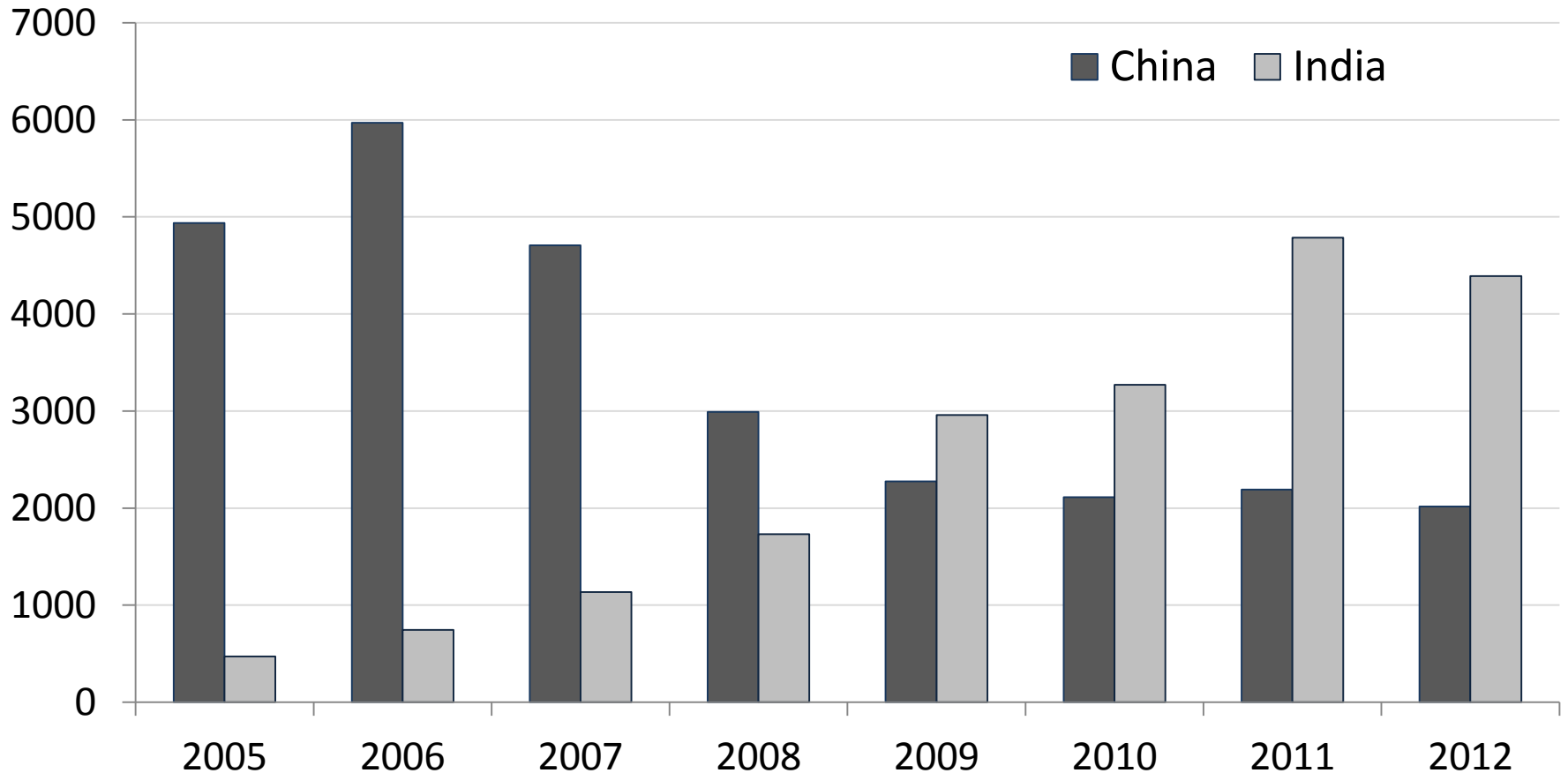
Decrease in rate impacts number of University students transitioning



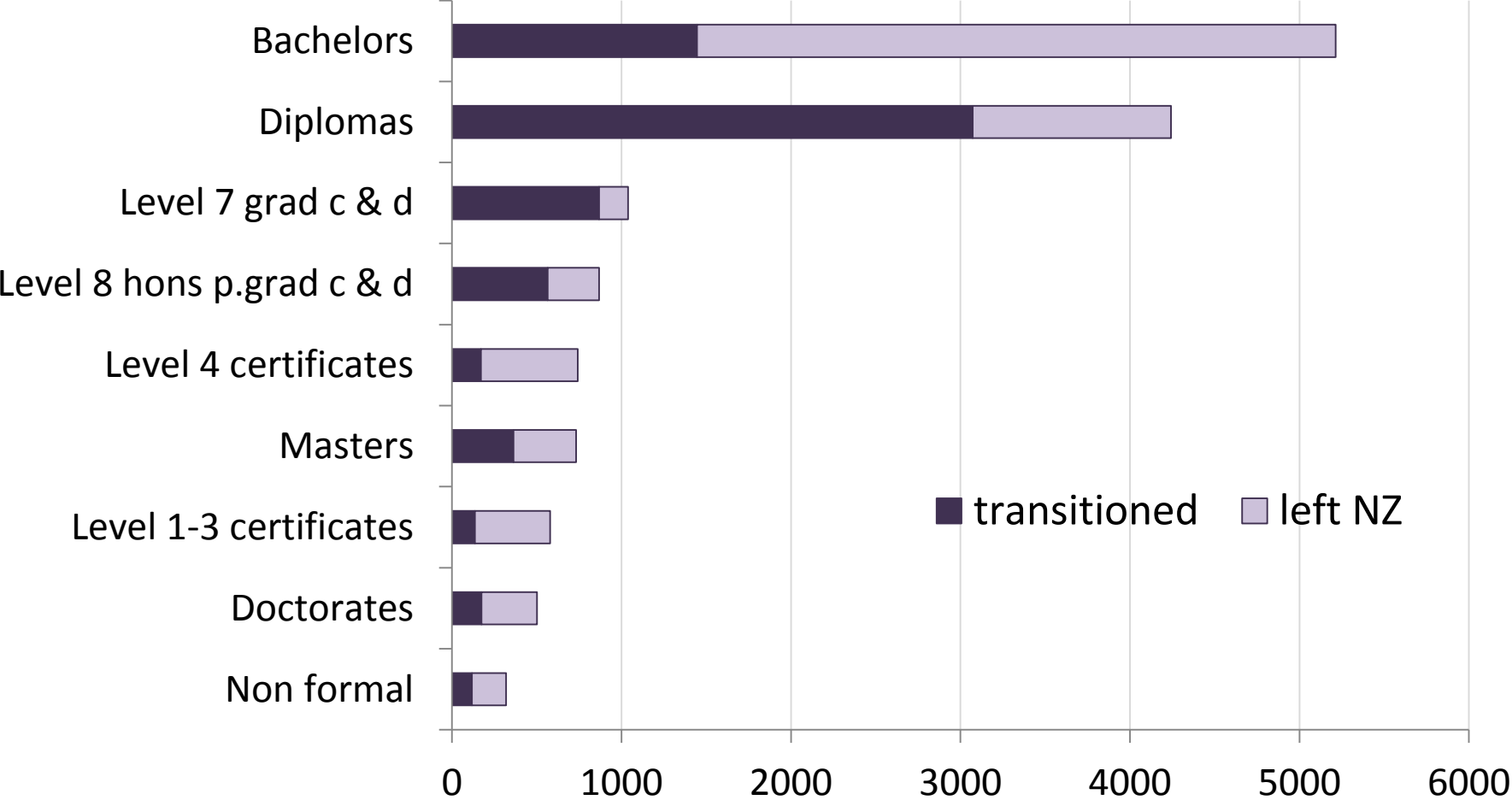
Highest numbers of students transitioning come from India



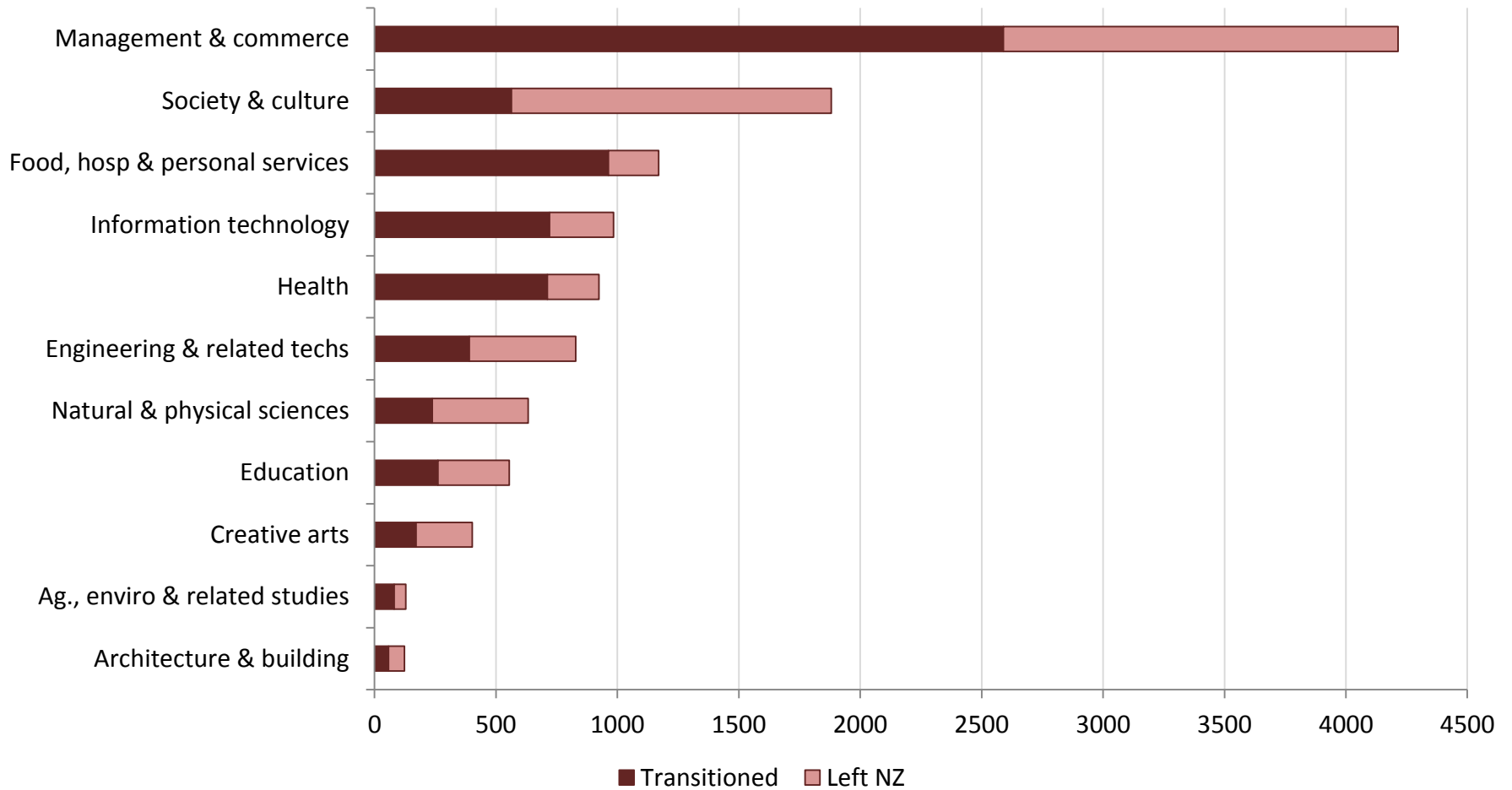
Number of Indian leavers transitioning over takes China in 2009



Largest group transitioning studied at Diploma level



38% of all students transitioning studied in the field of management and commerce



Further Analysis

- Three year outcomes
- Visa types



Next steps

- Publication of this report
- Employment and labour market outcomes

Email: cath.taylor@mbie.govt.nz

THANK YOU

