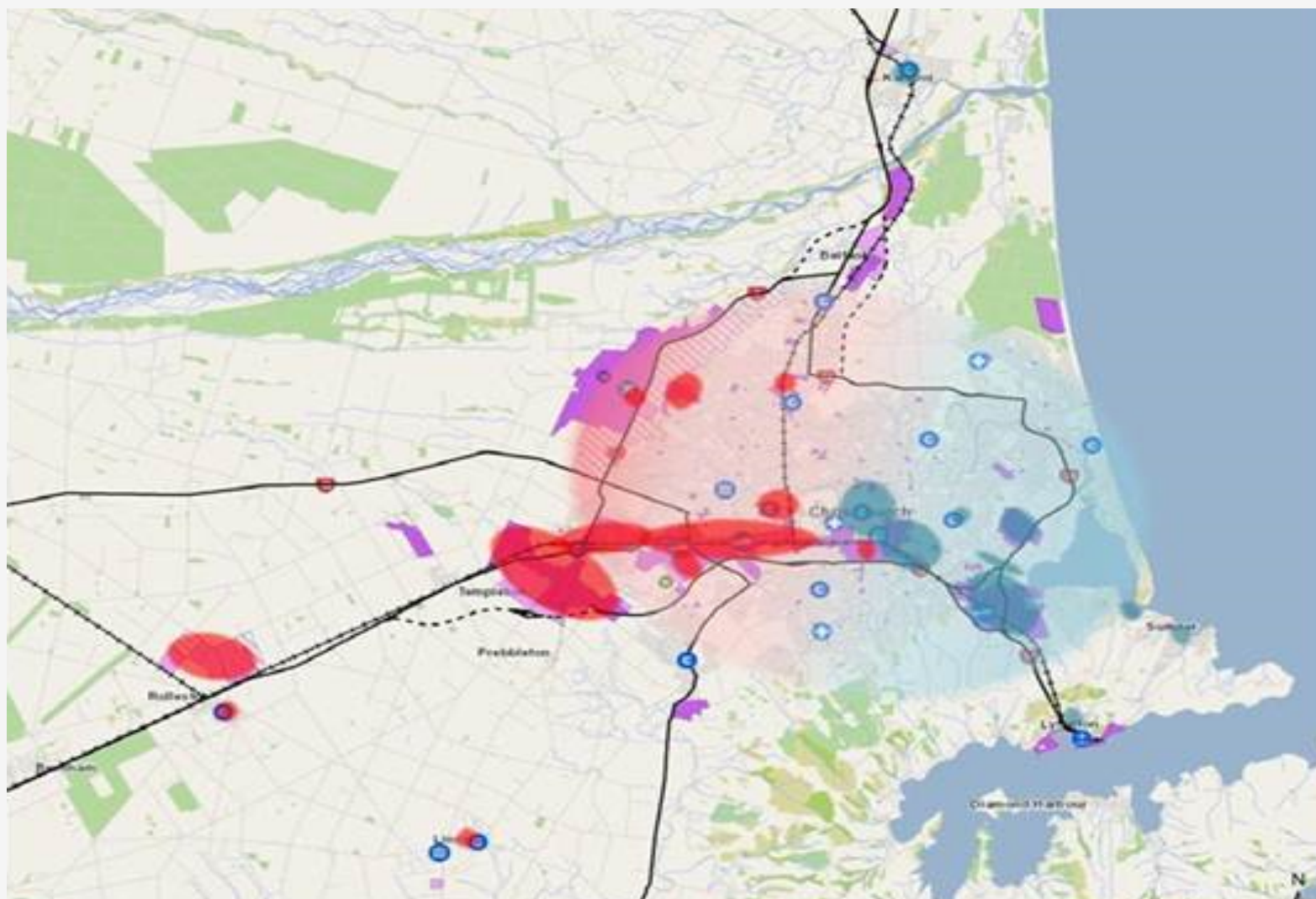


Migration Christchurch's Next Gap Filler

Presented by Steven Perdia, GM Strategy & Planning
Tuesday 22 October 2013













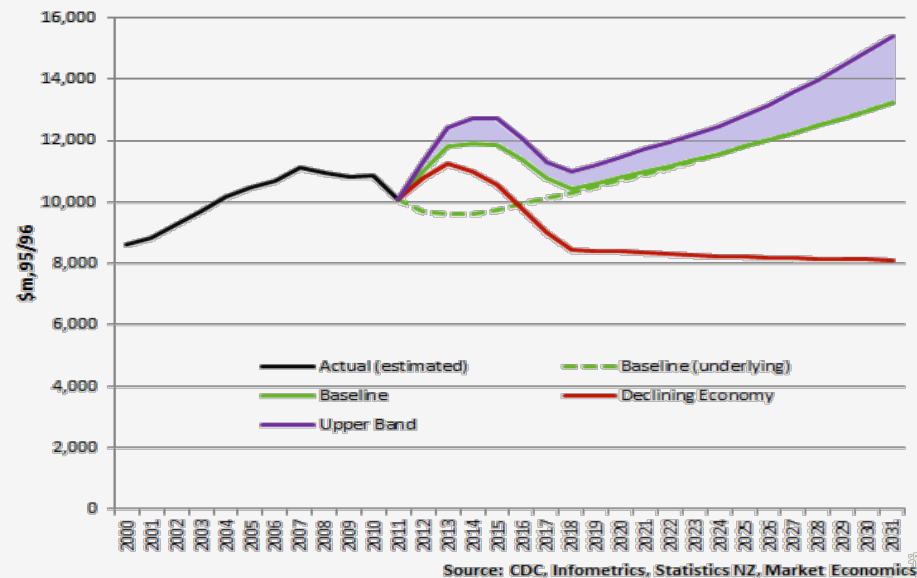




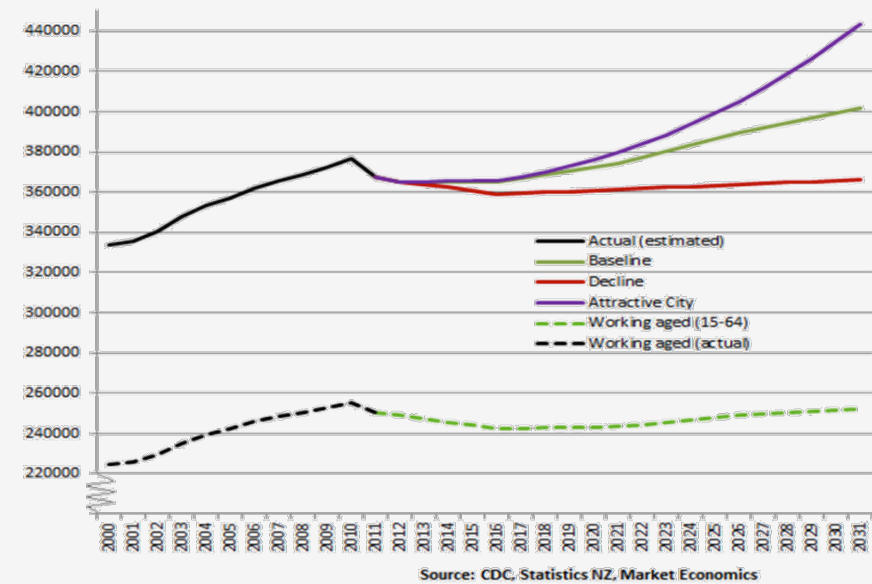
- ❖ Need labour
- ❖ Unemployment – Christchurch 4.2% compared with a NZ average of 6.2%
- ❖ All sectors are going to experience growth
- ❖ Wages inflation
- ❖ Feeling labour squeeze
- ❖ Pressure on school leavers

- ❖ Can't rely on natural population growth
- ❖ Needs more labour during the rebuild than it currently has
- ❖ What happens after the rebuild?

GDP Growth Projections



Population Growth Projections



- ❖ Respond to rapidly changes
- ❖ Flex with labour demand dynamics
- ❖ Balanced migration across the whole workforce, not just construction
- ❖ Bring adventurous, entrepreneurial, innovators to New Zealand
- ❖ Ensure temporary labour becomes permanent

- ❖ Central government engagement
- ❖ Skills hub
- ❖ Skills shortage group
- ❖ Sector workforce planning (profiling)
- ❖ Enhancing workforce information systems so migrants, employers and government have better information to inform decisions

